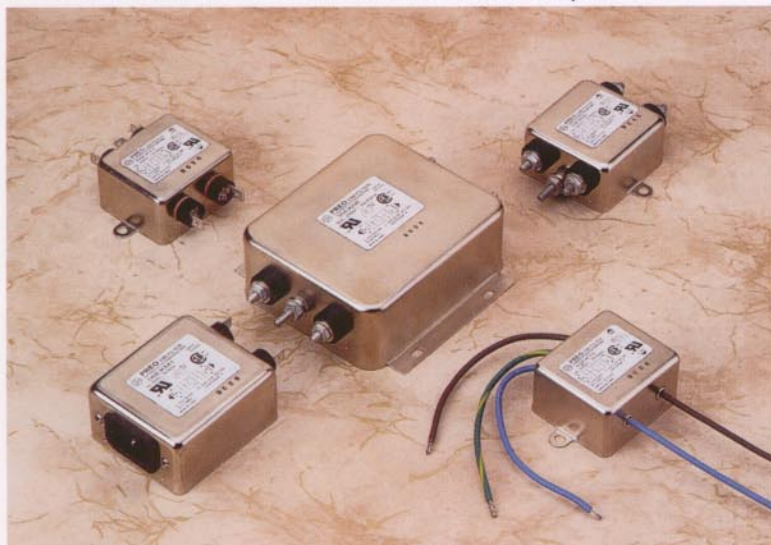


# PREO Power Line EMI Filters

A Division of Eastek International Corporation

# Series EK

General Purpose  
CM & Enhanced DM



UL Recognized  
CSA Certified  
VDE Approved

## Introduction

The EK series are general purpose EMI filters with enhanced differential mode performance. They are effective in suppressing both common mode and differential mode noise. This series is a very good choice when it is required to comply with EMI emission regulations, such as FCC-A and VDE-A. Available in a wide range of current ratings and termination styles.

## Minimum Insertion Loss in dB

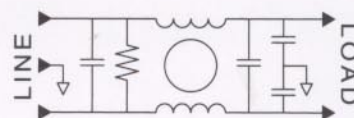
Common mode (line to ground) in 50 ohm system:

MODEL	Frequency in MHz								
	0.02	0.05	0.10	0.15	0.50	1.0	5.0	10	30
02EK11/33	7	15	21	24	35	43	45	45	40
03EK11/33/M1	8	16	22	26	37	45	45	45	40
06EK11/33/M1	4	11	16	20	31	40	45	45	40
10EK11/33/66/M1		2	5	9	20	25	38	42	40
20EK11/66		3	7	10	20	28	35	38	40
30EK66		4	8	12	23	30	35	38	40

Differential mode (line to line) in 50 ohm system:

MODEL	Frequency in MHz								
	0.05	0.10	0.15	0.50	1.0	3.0	5.0	10	30
02EK11/33	6	9	6	35	50	55	55	50	45
03EK11/33/M1	6	6	6	40	55	55	55	50	45
06EK11/33/M1	6	9	6	35	50	55	55	50	45
10EK11/33/66/M1	6	12	14	14	38	55	50	48	45
20EK11/66	6	12	14	14	38	55	50	48	45
30EK66	18	20	15	40	55	55	55	55	50

## Schematic



## Electrical ratings

Maximum operating voltage: 250 VAC

Operating frequency: 50/60 Hz

Hipot rating (one minute):

Line to Ground: 1500 VAC  
Line to Line: 1450 VDC

Maximum leakage current (each line to ground):

@ 120 VAC / 60 Hz: 0.25 mA  
@ 250 VAC / 50 Hz: 0.45 mA

Rated current at 40°C ambient temperature:

02EK11, 02EK33 2 A  
03EK11, 03EK33, 03EKM1 3 A  
06EK11, 06EK33, 06EKM1 6 A  
10EK11, 10EK33, 10EK66, 10EKM1 10 A  
20EK11, 20EK66 20 A  
30EK66 30 A

Now in Stock at

## EASTEK INTERNATIONAL CORPORATION

114 Joey Drive, Elk Grove, IL 60007, USA  
Phone: 847 437 2800 Fax: 847 437 2809

or your local agent