

CONCEALED HINGE

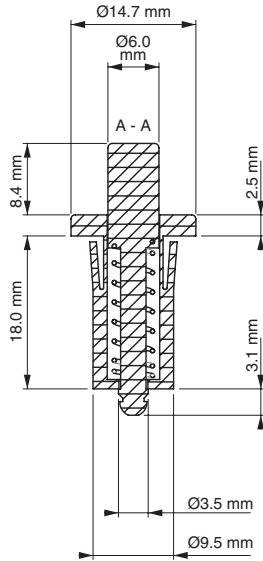


Specifications

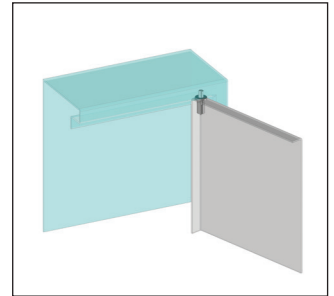
- Material:
Body: Polyamide DIN-EN ISO1043-1 PA6 GFR 30
Pin: Steel

Features

- For internally mounted doors
- Spring-loaded hinge for easy door removal
- Clip installation for easy assembly
- Available as spring-loaded, up-and-down pair; or spring-loaded up hinge and fixed bottom hinge

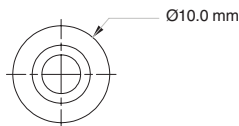
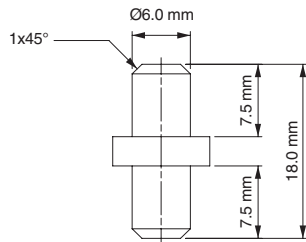


Hinge Rotation Angle



| Item Number | Hinge Rotation | Material | Finish |
|-------------|----------------|----------|--------|
| 089 | 110° | Nylon | Black |

BOTTOM PIVOT PIN



| Item Number |
|-------------|
| 32003192 |