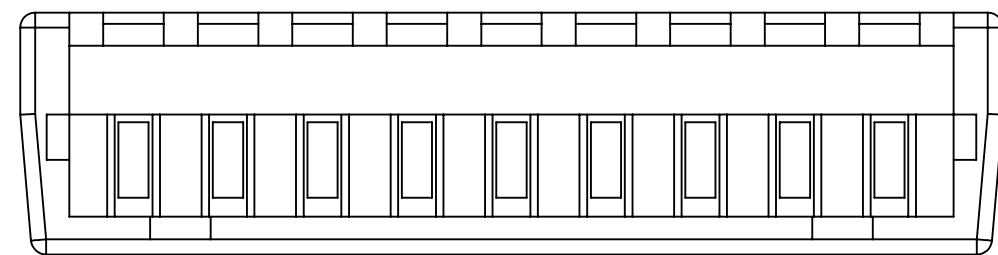
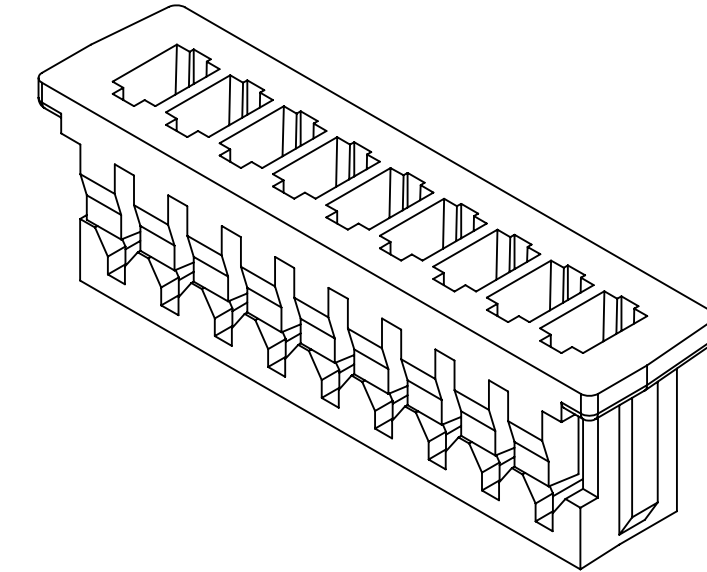
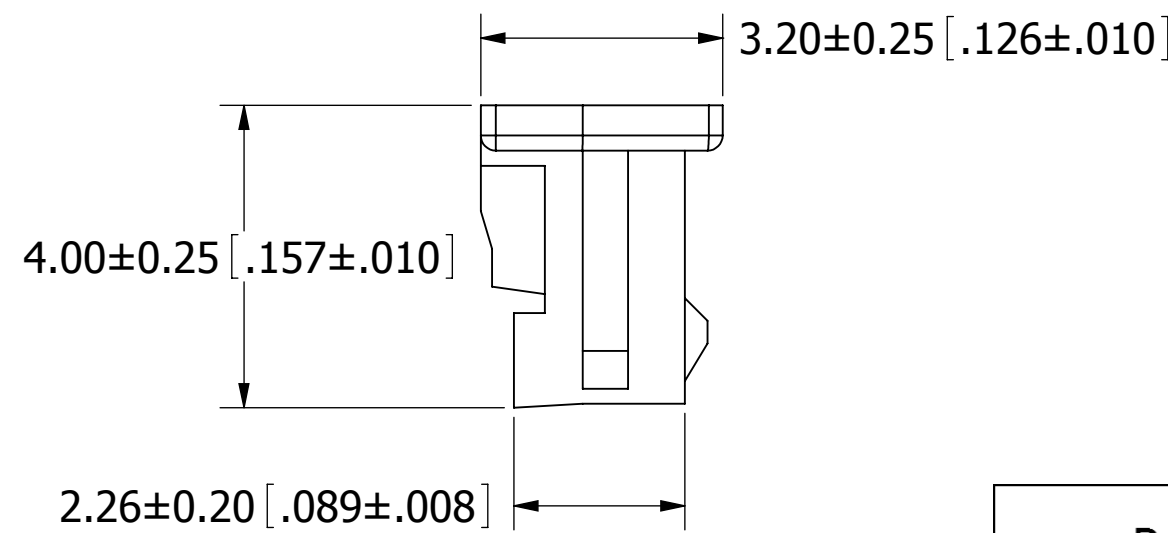
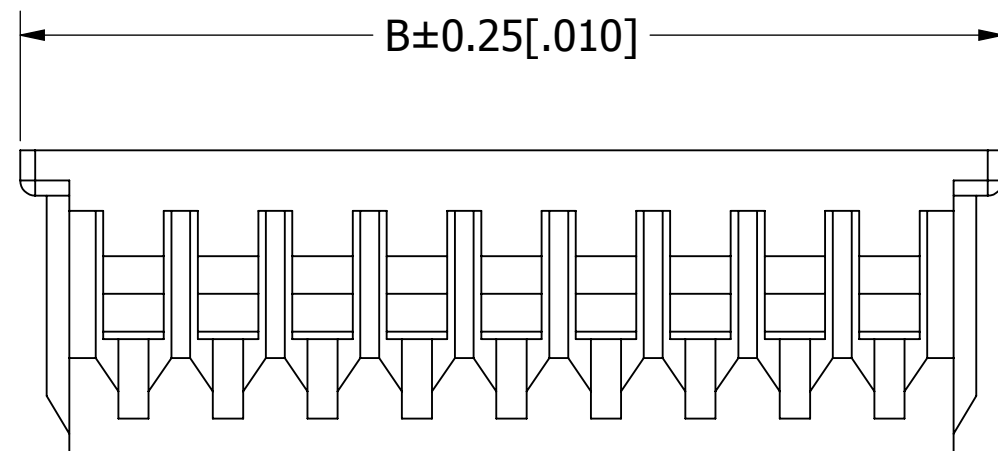
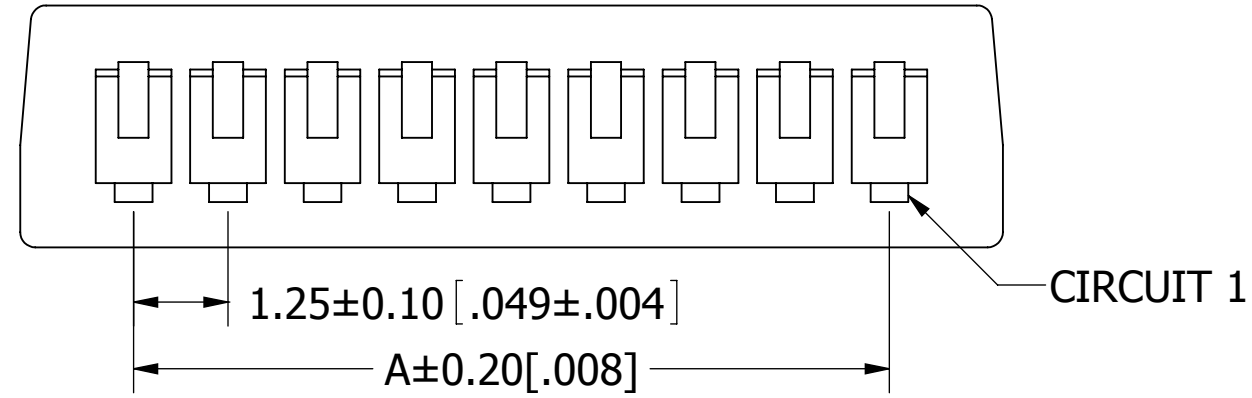


PART NUMBER CODING

SWH120-PULG-S__-UU-WH

NUMBER OF POSITIONS
(CONTACTS PER ROW)

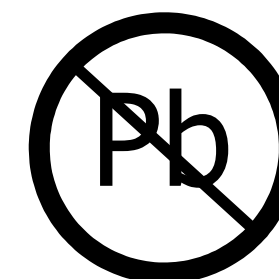
REVISIONS				
REV.	ECO. NO	DESCRIPTION	DATE	BY
A	2002	INITIAL RELEASE	7/17/2009	JH



Part Number	Positions/ Contacts	A		B	
		MM	INCH	MM	INCH
SWH120-PULG-S02-UU-WH	02/02	1.25	0.049	4.25	0.167
SWH120-PULG-S03-UU-WH	03/03	2.50	0.098	5.50	0.217
SWH120-PULG-S04-UU-WH	04/04	3.75	0.148	6.75	0.266
SWH120-PULG-S05-UU-WH	05/05	5.00	0.197	8.00	0.315
SWH120-PULG-S06-UU-WH	06/06	6.25	0.246	9.25	0.364
SWH120-PULG-S07-UU-WH	07/07	7.50	0.295	10.50	0.413
SWH120-PULG-S08-UU-WH	08/08	8.75	0.344	11.75	0.463
SWH120-PULG-S09-UU-WH	09/09	10.00	0.394	13.00	0.512
SWH120-PULG-S10-UU-WH	10/10	11.25	0.443	14.25	0.561
SWH120-PULG-S11-UU-WH	11/11	12.50	0.492	15.50	0.610
SWH120-PULG-S12-UU-WH	12/12	13.75	0.541	16.75	0.659
SWH120-PULG-S13-UU-WH	13/13	15.00	0.591	18.00	0.709
SWH120-PULG-S14-UU-WH	14/14	16.25	0.640	19.25	0.758
SWH120-PULG-S15-UU-WH	15/15	17.50	0.689	20.50	0.807

NOTES:

- INSULATOR MATERIAL: PBT, UL94V-0, COLOR:WHITE.
- CURRENT RATING: 1 AMP.
- VOLTAGE RATING: 125V AC/DC.
- INSULATOR RESISTANCE: 100 MEGOHMS MIN.
- CONTACT RESISTANCE: 20 MILLIOHMS MAX.
- DIELECTRIC WITHSTANDING VOLTAGE: 500V AC.
- OPERATING TEMPERATURE: -25° C TO +85° C.
- SUITABLE FOR SWT120 SERIES TERMINAL.
- MATES WITH SWR120 SERIES WAFER.



RoHS COMPLIANT

UNLESS OTHERWISE SPECIFIED:
DIMENSIONS ARE IN MM(INCHES)

TOLERANCES:
ANGULAR: ± 5°
.X = ± .3 [0.1]
.XX = ± .15 [0.06]
.XXX = ± .050 [0.020]
SURFACE FINISH: 63 R_a
REMOVE ALL BURRS AND SHARP EDGES .010 MAX

INTERPRET DIMENSIONS AND GEOMETRIC
TOLERANCING
PER: ANSI Y14.5M-1994

DRAWN	DATE	NAME
JH	7/28/2009	JH

THE INFORMATION HEREIN CONTAINS
PROPRIETARY INFORMATION OF
SULLINS ELECTRONICS AND IS NOT
TO BE REPRODUCED, USED OR
DISCLOSED TO OTHERS FOR ANY
PURPOSE EXCEPT AS SPECIFICALLY
AUTHORIZED IN WRITING BY AN
OFFICER OF SULLINS ELECTRONICS.

SULLINS CONNECTOR SOLUTIONS	
DESCRIPTION HOUSING, 1.25mm CC, 1 ROW	
PART NUMBER SWH120-PULG-S__-UU-WH	
SIZE C	DWG. NO. 11291
SCALE: 10:1	REV A
SHEET 1 OF 1	