

**AMPHENOL PART NUMBER CONFIGURATION**

**U90 - G 3X1 - 1XXX**

**HEAT SINK OPTION**

- 1 = NO HEAT SINK OR CLIP SHIPPED
- 5 = PIN STYLE HEAT SINK AND CLIP (H1=15.1; H2=6.5; SAN HEIGHT)
- 6 = PIN STYLE HEAT SINK AND CLIP (H1=12.8; H2=4.2; PCI HEIGHT)
- 7 = PIN STYLE HEAT SINK AND CLIP (H1= 22.1; H2=13.5; TALL)
- D = PIN-FIN STYLE HEAT SINK AND CLIP (H1=15.1; H2=6.5; SAN HEIGHT)
- E = PIN-FIN STYLE HEAT SINK AND CLIP (H1=12.8; H2=4.2; PCI HEIGHT)
- F = PIN-FIN STYLE HEAT SINK AND CLIP (H1= 22.1; H2=13.5; TALL)
- K = PIN STYLE HEAT SINK AND CLIP (H1=18.1; H2=9.5; CUSTOM HEIGHT)

NOTE:  
FOR LOCATION OF "H1" AND "H2" DIMENSIONS SEE SHEET 2

**PACKAGING OPTIONS**

- Q = TRAY PACKAGING (HEAT SINK & CLIP SHIPPED IN SEPARATE TRAY, IF ORDERED)
- A = TRAY PACKAGING, HEAT SINK & CLIP SHIPPED ASSEMBLED
- B = TRAY PACKAGING, HEAT SINK & CLIP SHIPPED ASSEMBLED WITH LIGHT PIPE BULK PACKED

**LIGHT PIPE AND BEHIND BEZEL COVER OPTIONS**

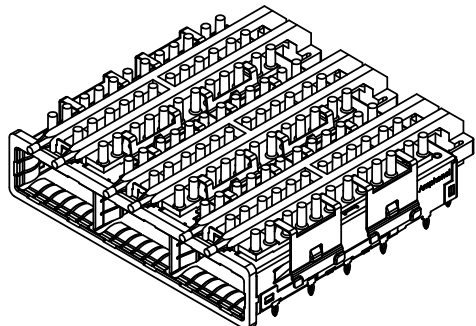
- Q = STANDARD (NO LIGHT PIPES)
- 1 = WITH ROUND LIGHT PIPES
- 2 = WITH ROUND LIGHT PIPES AND WITH BEHIND BEZEL EMI GASKET SHIPPED LOOSE
- 3 = WITH SQUARE LIGHT PIPES
- 7 = WITH ROUND SINGLE BARREL LIGHT PIPE
- B = WITH SQUARE LIGHT PIPES, WITH LIGHT INLET SURFACE AT 1.45 mm OFF THE PCB

**OPTIONAL DUST COVER**

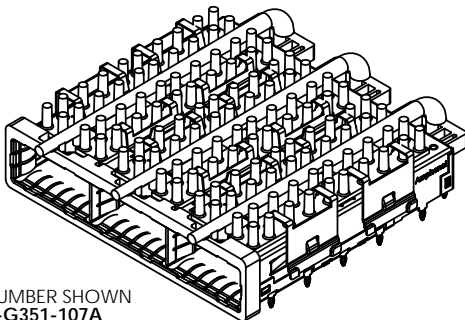
- Q = WITHOUT DUST COVER
- D = WITH DUST COVER (SHIPPED AS LOOSE PIECE)

REV - DESCRIPT - DATE - APPRVD

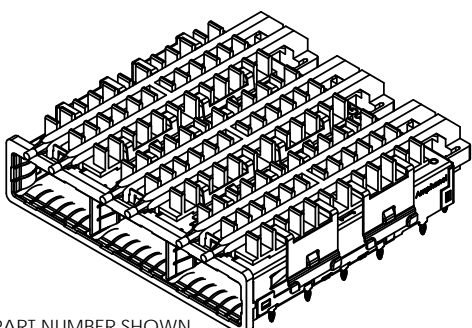
|   |
|---|
| U - CORRECTED EMI GASKET NOTE --- SEP 29/10 |
| V - CUTOUT POSITION REVISED --- JAN 03/12   |
| W - ADDED NEW OPTION --- JUN 19/12          |
| Z - ADDED NEW OPTION "B" --- SEP 10/12      |
| Y - ADDED NEW OPTION "K" --- OCT 15/12      |



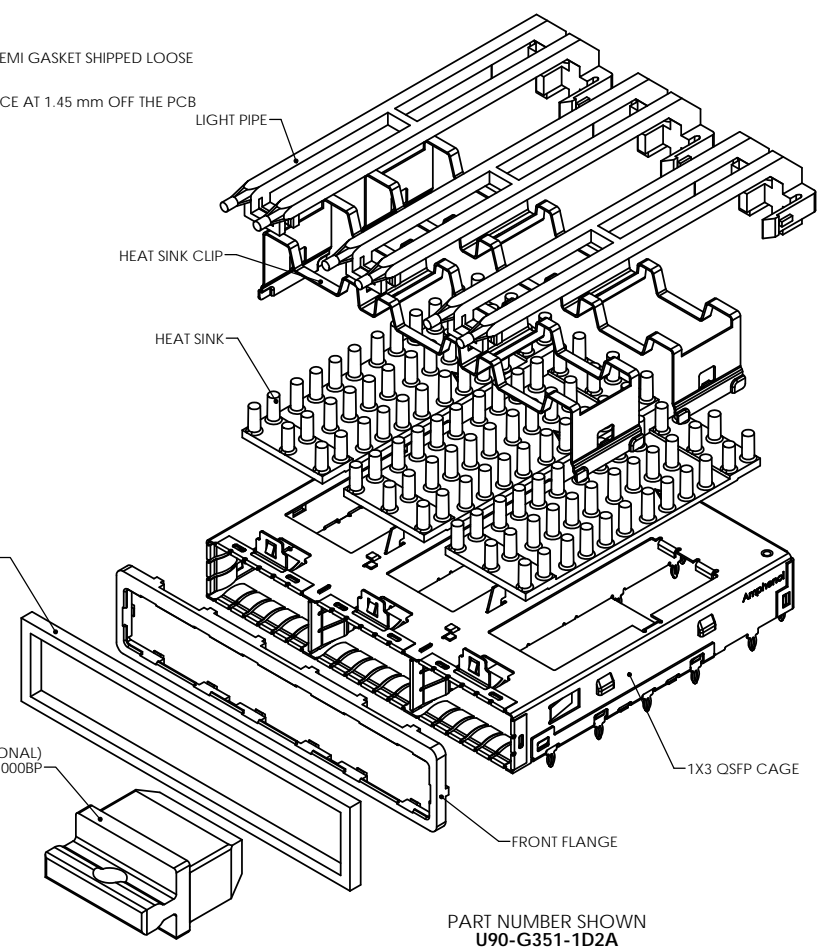
PART NUMBER SHOWN  
**U90-G351-101A**



PART NUMBER SHOWN  
**U90-G351-107A**



PART NUMBER SHOWN  
**U90-G3D1-101A**



BEHIND BEZEL EMI GASKET (OPTIONAL)  
P/N: U90-1320-8010-BP

DUST COVER(OPTIONAL)  
P/N: U90-1401-8000BP

LIGHT PIPE

HEAT SINK CLIP

HEAT SINK

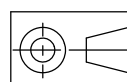
1X3 QSFP CAGE

FRONT FLANGE

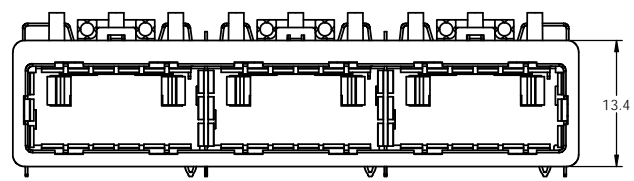
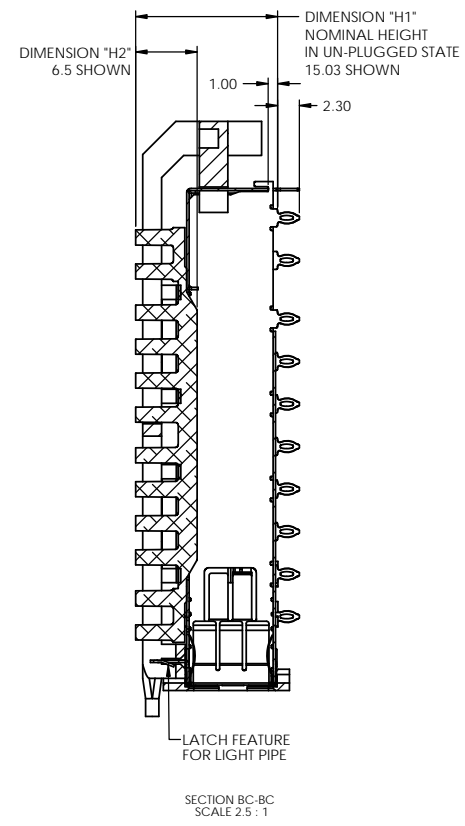
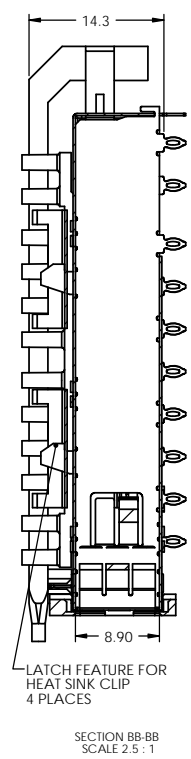
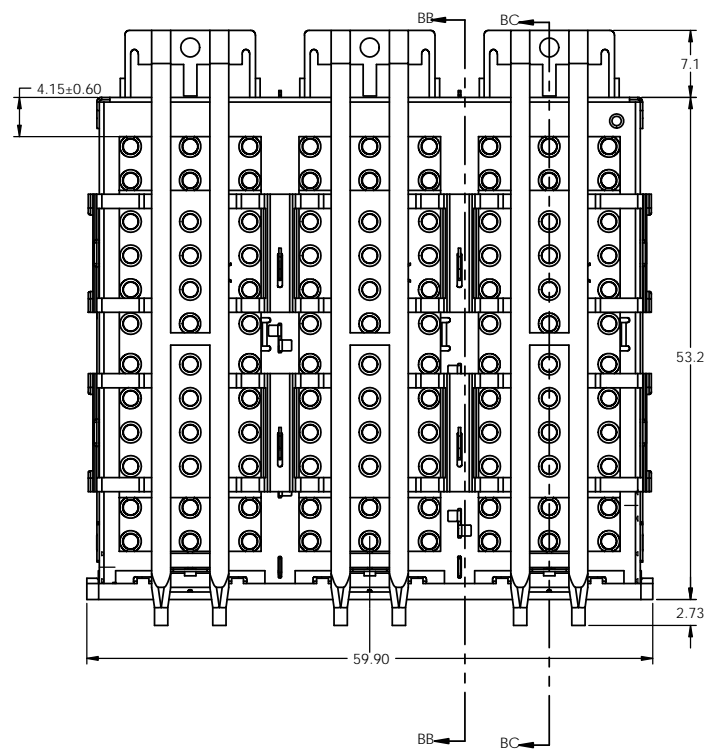
PART NUMBER SHOWN  
**U90-G351-1D2A**  
(EXPLODED VIEW)



|   |        |                 |           |  |                 |
|---|--------|-----------------|-----------|--|-----------------|
| UNLESS OTHERWISE SPECIFIED DIMENSIONS ARE IN MILLIMETER TOLERANCES ARE: |        | APPROVALS       | DATE      | Amphenol High Speed Interconnects<br>A Division of Amphenol Corp. www.amphenol-highspeed.com |                 |
| DECIMALS  | ANGLES | DRAWN<br>Z.LJ   | MAY 23/08 | TITLE  |                 |
| .XX ± .10   | ± 1°   | DESIGNED<br>ZLJ | MAY 23/08 | QSFP 1x3 CAGE<br>BEHIND BEZEL  |                 |
| .X ± .25  |        | CHECKED         |           | WITH HEATSINK, CLIP AND LIGHT PIPE   |                 |
| MATERIAL AND FINISH   |        | QA APP'D        |           | SIZE   | DWG. NO.        |
|   |        | IE APP'D        |           | C  | P-U90-G3X1-1XXX |
| REF.  |        | DWG APP'D       |           | SCALE  | PROJECT         |
| CODE IDENT. NO.   |        | A.GREEN         | DEC.5.07  | 2:1  | PROJECT         |
|   |        |                 |           |  | SHEET           |
|   |        |                 |           |  | 1 OF 11         |



DO NOT SCALE DRAWING  
THIS DOCUMENT CONTAINS PROPRIETARY INFORMATION AND SUCH INFORMATION MAY NOT BE DISCLOSED TO OTHERS FOR ANY PURPOSE OR USED FOR MANUFACTURING PURPOSES WITHOUT PERMISSION FROM AMPHENOL CANADA CORP.



**PART NUMBER SHOWN**  
**U90-G351-101A**  
**(WITH ROUND LIGHT PIPE)**

**NOTES:**

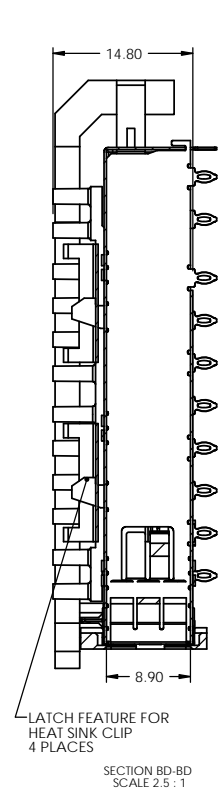
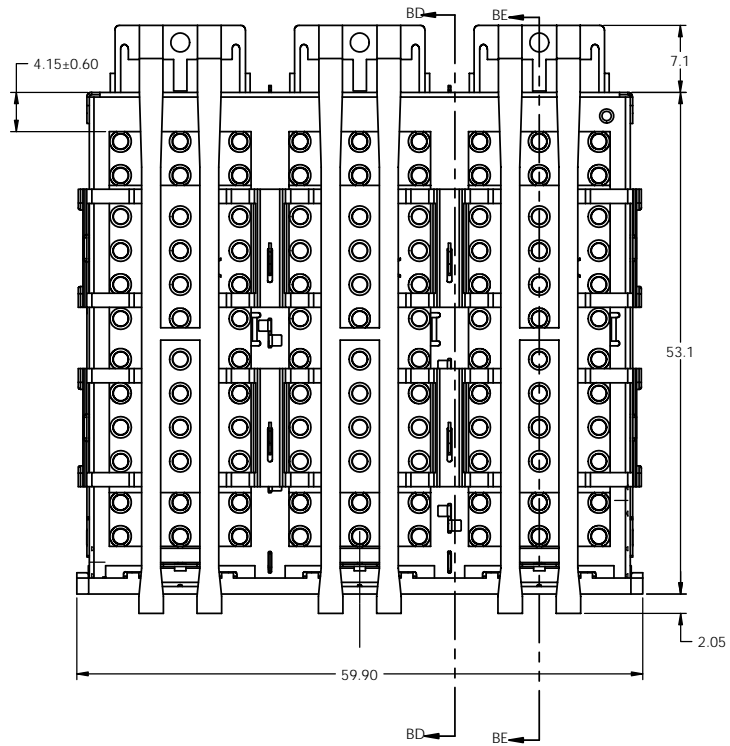
1. MATERIAL:  
CAGE AND EMI SPRINGS: COPPER ALLOY  
FRONT FLANGE: ZINC DIE CAST  
HEAT SINK CLIP: STEEL ALLOY  
PIN-FIN STYLE HEAT SINK: ALUMINUM  
PIN STYLE HEAT SINK: NICKEL PLATED ALUMINUM  
CAGE PLATING: 3.81µm [100µ"] MIN. NICKEL.  
LIGHT PIPE: GE LEXAN, OPTICAL GRADE
2. CAGE IS INTENDED FOR USE WITH THE  
QUAD SMALL FORM-FACTOR PLUGGABLE (QSFP)  
TRANSCEIVER SPECIFICATION INF-8438i.

| DIMENSION "H1" SHOWN IN UN-PLUGGED STATE |           |           |
|--|-----------|-----------|
| PART NUMBER                              | DIM. "H1" | DIM. "H2" |
| U90-G351-1XXX                            | 15.03     | 6.50      |
| U90-G361-1XXX                            | 12.37     | 4.20      |
| U90-G371-1XXX                            | 22.03     | 13.50     |
| U90-G3D1-1XXX                            | 15.03     | 6.50      |
| U90-G3E1-1XXX                            | 12.37     | 4.20      |
| U90-G3F1-1XXX                            | 22.03     | 13.50     |
| U90-G3K1-1XXX                            | 18.03     | 9.50      |

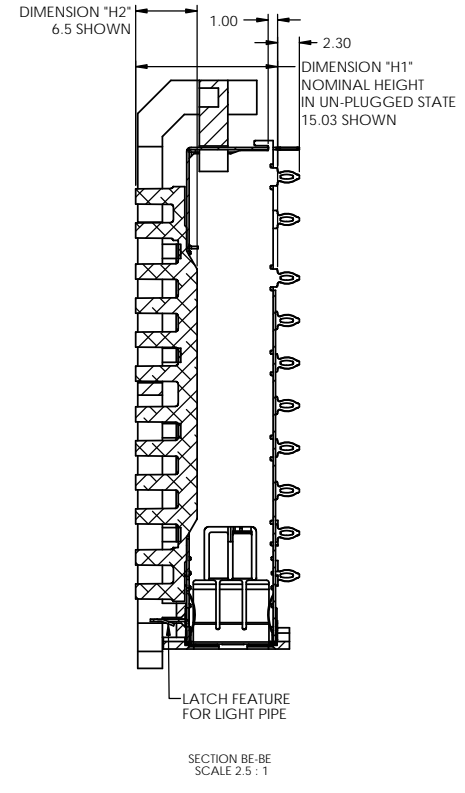


|   |        |           |           |
|---|--------|-----------|-----------|
| UNLESS OTHERWISE SPECIFIED DIMENSIONS ARE IN MILLIMETER TOLERANCES ARE: |        | APPROVALS | DATE      |
| DECIMALS  | ANGLES | DRAWN     | MAY 23/08 |
| .XX ±.10  | ± 1°   | Z.LJ      |           |
| .X ±.25   |        | DESIGNED  | MAY 23/08 |
|   |        | ZLJ       |           |
| MATERIAL AND FINISH   |        | CHECKED   |           |
|   |        | QA APP'D  |           |
|   |        | IE APP'D  |           |
| REF.  |        | DWG APP'D |           |
| CODE IDENT. NO.   |        | A.GREEN   | DEC.5.07  |

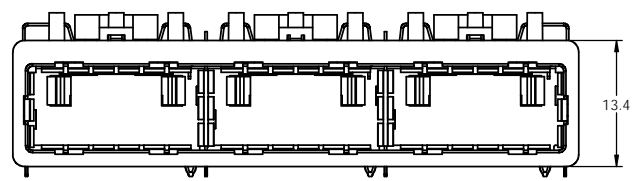
|  |                 |         |  |
|--|-----------------|---------|--|
| Amphenol High Speed Interconnects<br>A Division of Amphenol Corp. www.amphenol-highspeed.com |                 |         |  |
| TITLE<br><b>QSFP 1x3 CAGE<br/>BEHIND BEZEL<br/>WITH HEATSINK, CLIP AND LIGHT PIPE</b>        |                 |         |  |
| SIZE   | DWG. NO.        | REV.    |  |
| C  | P-U90-G3X1-1XXX | Y       |  |
| SCALE  | PROJECT         | SHEET   |  |
| 2:1  | PROJECT         | 2 OF 11 |  |



SECTION BD-BD  
SCALE 2.5:1



SECTION BE-BE  
SCALE 2.5:1



**PART NUMBER SHOWN**  
**U90-G351-103A**  
**(WITH SQUARE LIGHT PIPE)**

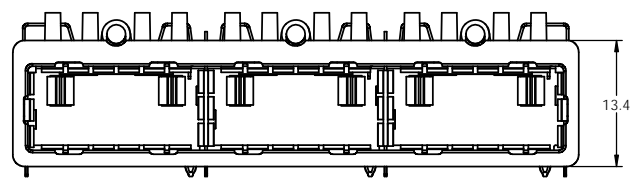
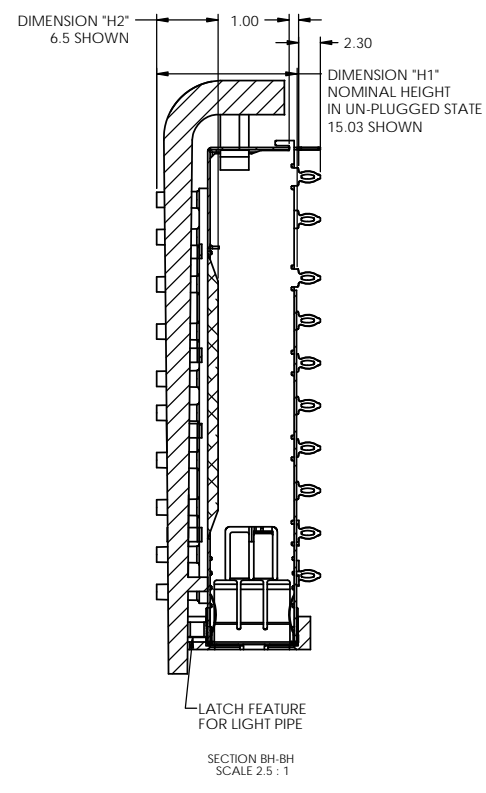
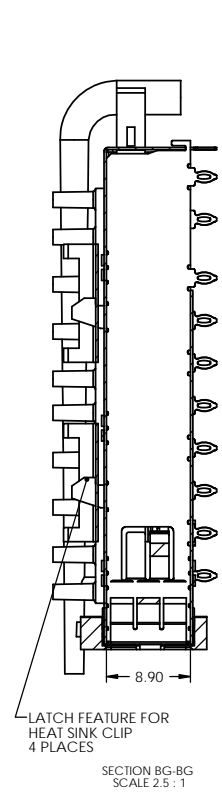
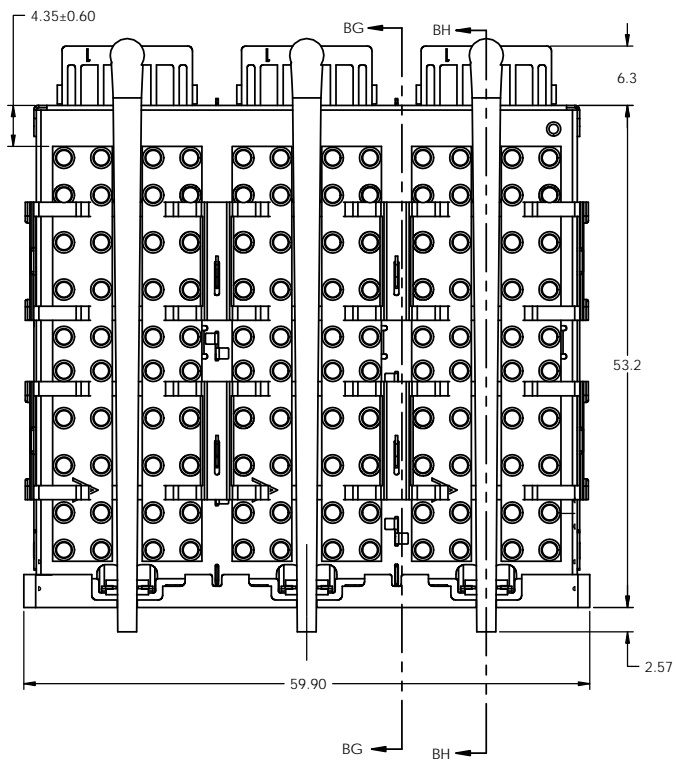
**NOTES:**

- MATERIAL:**  
CAGE AND EMI SPRINGS: COPPER ALLOY  
FRONT FLANGE: ZINC DIE CAST  
HEAT SINK CLIP: STEEL ALLOY  
PIN-FIN STYLE HEAT SINK: ALUMINUM  
PIN STYLE HEAT SINK: NICKEL PLATED ALUMINUM  
CAGE PLATING: 3.81µm [100µ"] MIN. NICKEL.  
LIGHT PIPE: GE LEXAN, OPTICAL GRADE
- CAGE IS INTENDED FOR USE WITH THE QUAD SMALL FORM-FACTOR PLUGGABLE (QSFP) TRANSCEIVER SPECIFICATION INF-8438i.

| DIMENSION "H1" SHOWN IN UN-PLUGGED STATE |           |           |
|--|-----------|-----------|
| PART NUMBER                              | DIM. "H1" | DIM. "H2" |
| U90-G351-1XXX                            | 15.03     | 6.50      |
| U90-G361-1XXX                            | 12.37     | 4.20      |
| U90-G371-1XXX                            | 22.03     | 13.50     |
| U90-G3D1-1XXX                            | 15.03     | 6.50      |
| U90-G3E1-1XXX                            | 12.37     | 4.20      |
| U90-G3F1-1XXX                            | 22.03     | 13.50     |
| U90-G3K1-1XXX                            | 18.03     | 9.50      |



|   |                |                      |           |  |                             |
|---|----------------|----------------------|-----------|--|-----------------------------|
| UNLESS OTHERWISE SPECIFIED DIMENSIONS ARE IN MILLIMETER TOLERANCES ARE: |                | APPROVALS            | DATE      | Amphenol High Speed Interconnects<br>A Division of Amphenol Corp. www.amphenol-highspeed.com |                             |
| DECIMALS<br>.XX ±.10<br>.X ±.25   | ANGLES<br>± 1° | DRAWN<br>Z.LJ        | MAY 23/08 |  |                             |
| MATERIAL AND FINISH   |                | DESIGNED<br>ZLJ      | MAY 23/08 | TITLE<br><b>QSFP 1x3 CAGE<br/>BEHIND BEZEL</b><br>WITH HEATSINK, CLIP AND LIGHT PIPE         |                             |
|   |                | CHECKED              |           |  |                             |
| REF.  |                | QA APP'D             |           | SIZE<br>C  | DWG. NO.<br>P-U90-G3X1-1XXX |
|   |                | IE APP'D             |           | SCALE<br>2:1   | PROJECT<br>PROJECT          |
| CODE IDENT. NO.   |                | DWG APP'D<br>A.GREEN | DEC.5.07  | SHEET<br>3 OF 11   |                             |



**PART NUMBER SHOWN**  
**U90-G351-107A**  
**(WITH SINGLE BARREL**  
**ROUND LIGHT PIPE)**

**NOTES:**

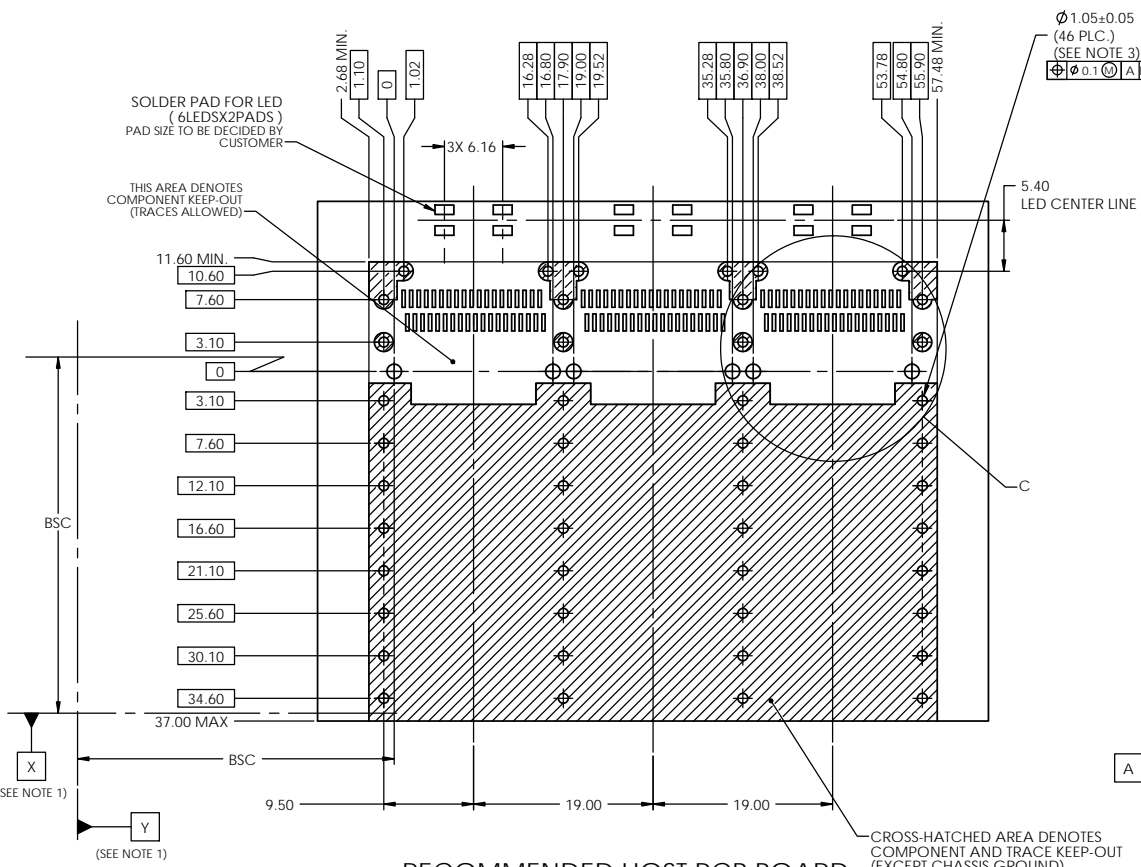
- MATERIAL:**  
CAGE AND EMI SPRINGS: COPPER ALLOY  
FRONT FLANGE: ZINC DIE CAST  
HEAT SINK CLIP: STEEL ALLOY  
PIN-FIN STYLE HEAT SINK: ALUMINUM  
PIN STYLE HEAT SINK: NICKEL PLATED ALUMINUM  
CAGE PLATING: 3.81µm [100µ"] MIN. NICKEL.  
LIGHT PIPE: GE LEXAN, OPTICAL GRADE
- CAGE IS INTENDED FOR USE WITH THE QUAD SMALL FORM-FACTOR PLUGGABLE (QSFP) TRANSCEIVER SPECIFICATION INF-8438i.

| DIMENSION "H1" SHOWN IN UN-PLUGGED STATE |           |           |
|--|-----------|-----------|
| PART NUMBER                              | DIM. "H1" | DIM. "H2" |
| U90-G351-1XXX                            | 15.03     | 6.50      |
| U90-G361-1XXX                            | 12.37     | 4.20      |
| U90-G371-1XXX                            | 22.03     | 13.50     |
| U90-G3D1-1XXX                            | 15.03     | 6.50      |
| U90-G3E1-1XXX                            | 12.37     | 4.20      |
| U90-G3F1-1XXX                            | 22.03     | 13.50     |
| U90-G3K1-1XXX                            | 18.03     | 9.50      |



|   |                   |           |
|---|-------------------|-----------|
| UNLESS OTHERWISE SPECIFIED DIMENSIONS ARE IN MILLIMETER TOLERANCES ARE:<br><br>DECIMALS .XX ±.10<br>.X ±.25<br><br>ANGLES ± 1°<br><br>MATERIAL AND FINISH | APPROVALS         | DATE      |
|   | DRAWN Z.LJ        | MAY 23/08 |
| REF.  | DESIGNED Z.LJ     | MAY 23/08 |
|   | CHECKED           |           |
| CODE IDENT. NO.   | QA APP'D          |           |
|   | IE APP'D          |           |
|   | DWG APP'D A.GREEN | DEC.5,07  |

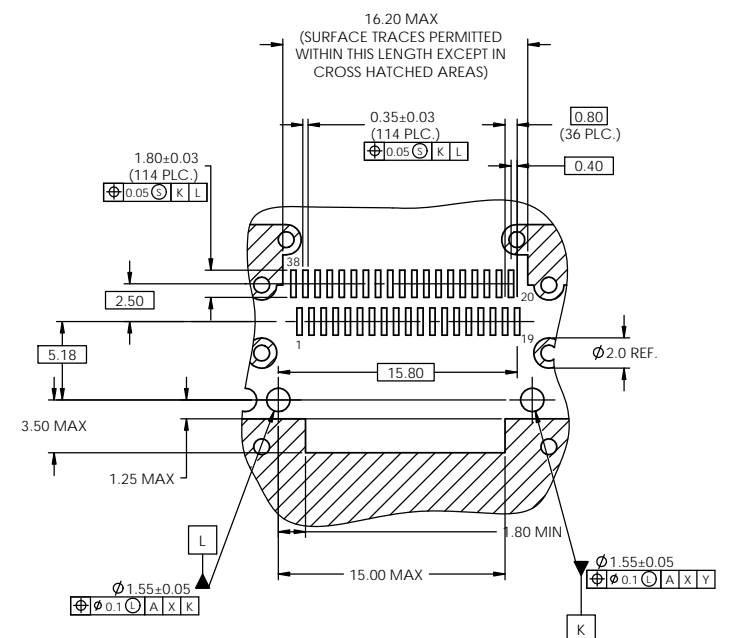
|  |                          |               |
|--|--------------------------|---------------|
| Amphenol High Speed Interconnects<br>A Division of Amphenol Corp. www.amphenol-highspeed.com |                          |               |
| TITLE<br><b>QSFP 1x3 CAGE</b><br><b>BEHIND BEZEL</b><br>WITH HEATSINK, CLIP AND LIGHT PIPE   |                          |               |
| SIZE C   | DWG. NO. P-U90-G3X1-1XXX | REV. Y        |
| SCALE 2:1  | PROJECT PROJECT          | SHEET 4 OF 11 |



**RECOMMENDED HOST PCB BOARD  
 BEHIND BEZEL BELLY TO BELLY LAYOUT  
 FOR DOUBLE BARREL LIGHT PIPE  
 (COMPONENT SIDE OF BOARD)**

- NOTES:
- DATUM X AND Y ESTABLISHED BY CUSTOMER'S FUDICIAL.
  - LOCATION OF EDGE OF PCB IS APPLICATION SPECIFIC.
  - FINISHED HOLE SIZE.

$\varnothing 1.05 \pm 0.05$   
 (46 PLC.)  
 (SEE NOTE 3)  
 $\varnothing 0.1 \text{ (A) } \text{K} \text{ (C) } \text{ (C)}$

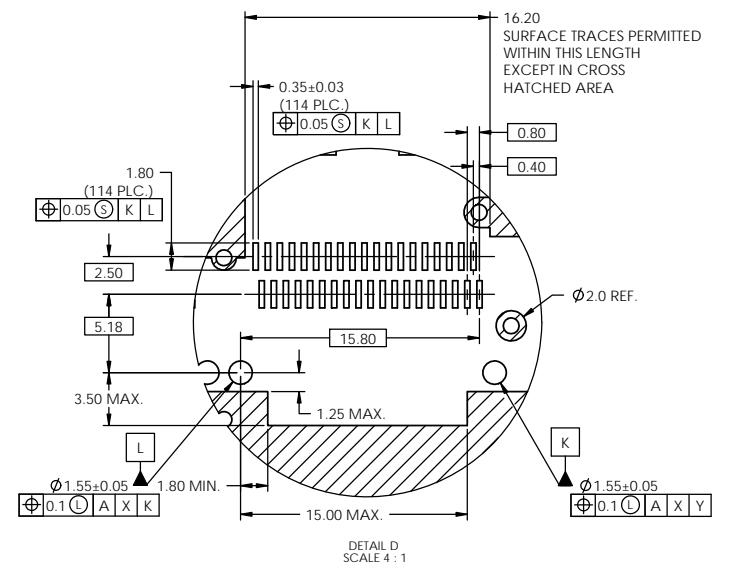
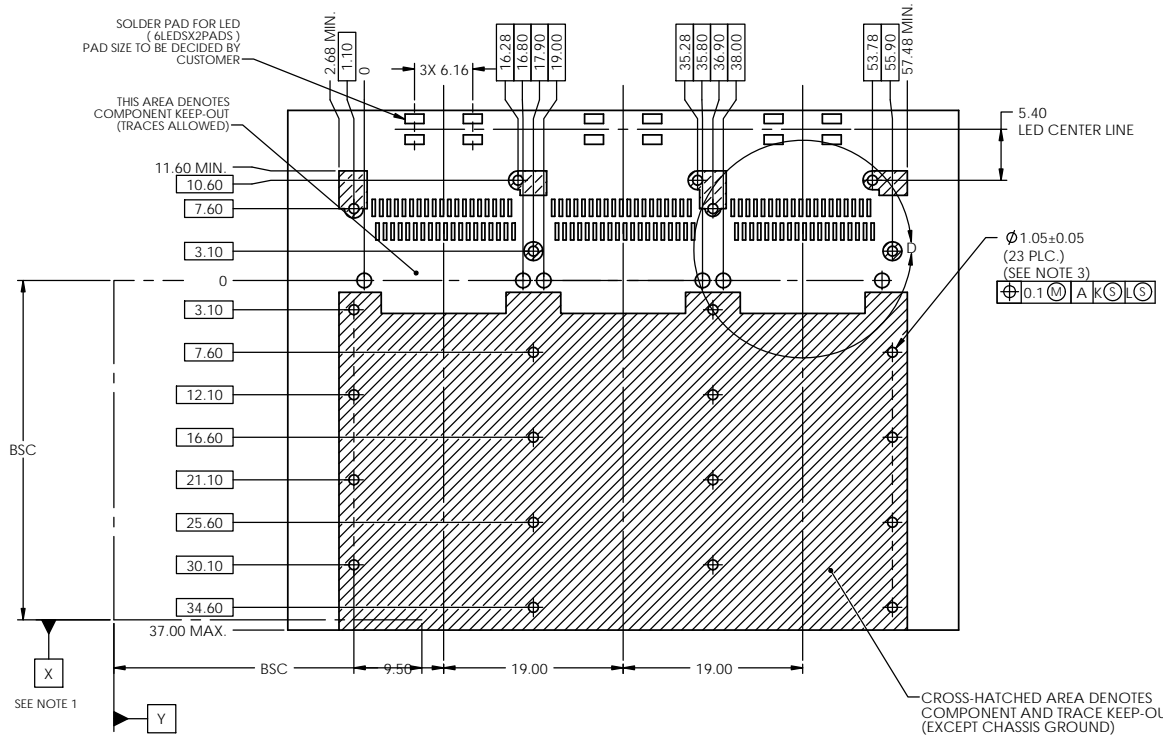


**DETAIL C  
 SCALE 4 : 1**

**3.20 ± 0.32  
 FOR BELLY TO BELLY APPLICATION**



|   |        |                      |           |   |                             |
|---|--------|----------------------|-----------|---|-----------------------------|
| UNLESS OTHERWISE SPECIFIED DIMENSIONS ARE IN MILLIMETER TOLERANCES ARE: |        | APPROVALS            | DATE      | <b>Amphenol High Speed Interconnects</b><br>A Division of Amphenol Corp. www.amphenol-highspeed.com |                             |
| DECIMALS  | ANGLES | DRAWN<br>Z.LJ        | MAY 23/08 |   |                             |
| .XX ± .10   | ± 1°   | DESIGNED<br>ZLJ      | MAY 23/08 | TITLE<br><b>QSFP 1x3 CAGE<br/>BEHIND BEZEL</b>  |                             |
| .X ± .25  |        | CHECKED              |           | WITH HEATSINK, CLIP AND LIGHT PIPE  |                             |
| MATERIAL AND FINISH   |        | QA APP'D             |           | SIZE<br>C   | DWG. NO.<br>P-U90-G3X1-1XXX |
| REF.  |        | IE APP'D             |           | SCALE<br>5:2  | PROJECT<br>PROJECT          |
| CODE IDENT. NO.   |        | DWG APP'D<br>A.GREEN | DEC.5.07  | SHEET<br>5 OF 11  | REV.<br>Y                   |



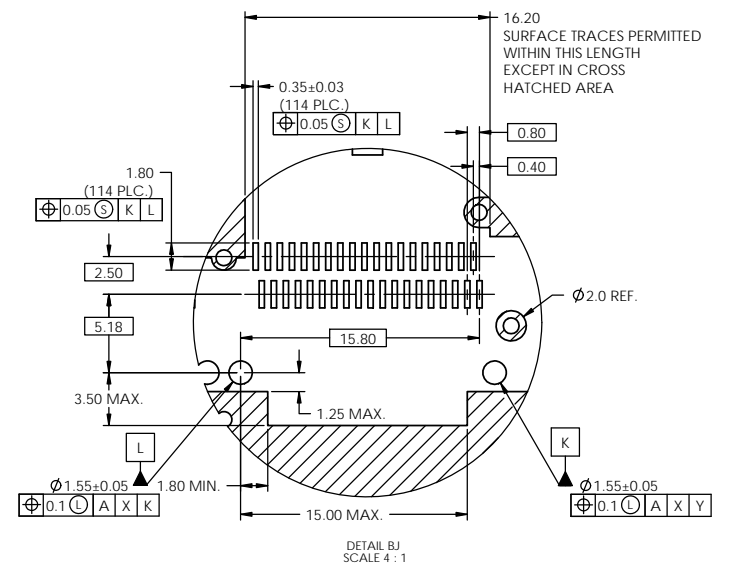
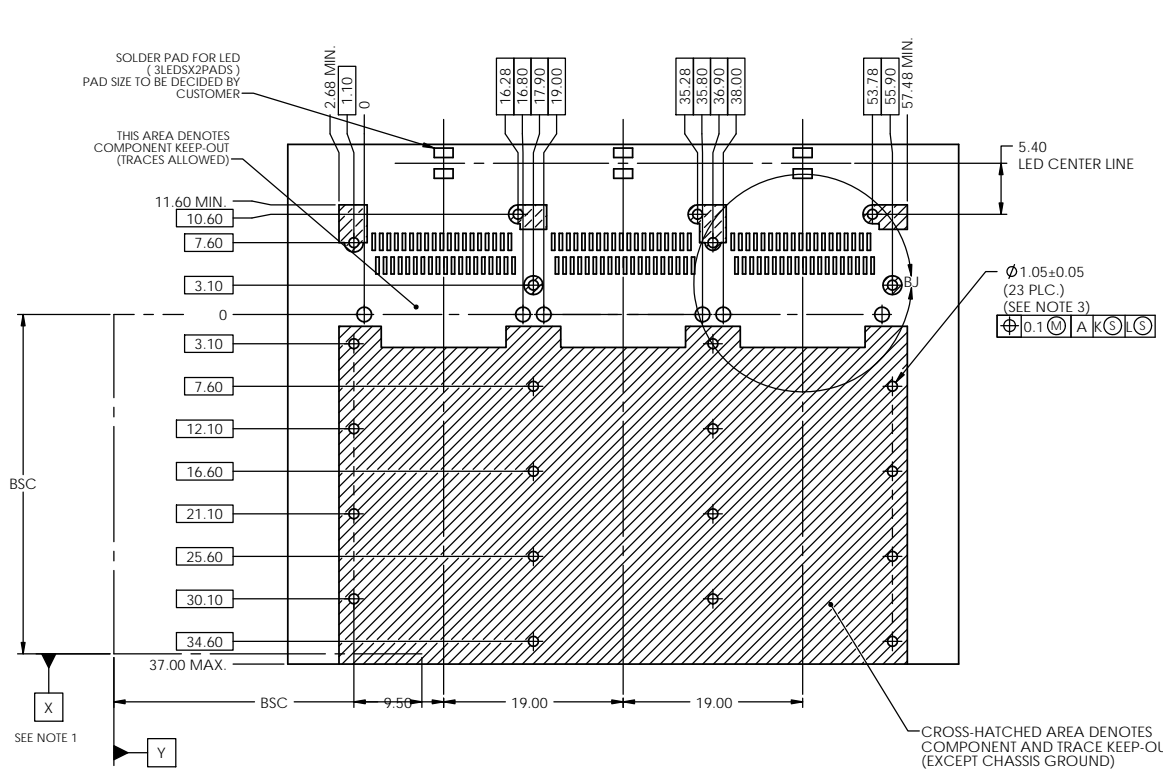
**RECOMMENDED HOST PCB BOARD  
 SINGLE LEVEL MOUNTING LAYOUT  
 FOR DOUBLE BARREL LIGHT PIPE  
 (COMPONENT SIDE OF BOARD)**

- NOTES:
- DATUM X AND Y ESTABLISHED BY CUSTOMER'S FUDUCIAL.
  - LOCATION OF EDGE OF PCB IS APPLICATION SPECIFIC.
  - FINISHED HOLE SIZE.



|   |        |                      |           |  |                             |
|---|--------|----------------------|-----------|--|-----------------------------|
| UNLESS OTHERWISE SPECIFIED DIMENSIONS ARE IN MILLIMETER TOLERANCES ARE: |        | APPROVALS            | DATE      | Amphenol High Speed Interconnects<br>A Division of Amphenol Corp. www.amphenol-highspeed.com |                             |
| DECIMALS  | ANGLES | DRAWN<br>Z.LJ        | MAY 23/08 |  |                             |
| .XX ±.10  | ± 1°   | DESIGNED<br>ZLJ      | MAY 23/08 | TITLE<br><b>QSFP 1x3 CAGE<br/>BEHIND BEZEL<br/>WITH HEATSINK, CLIP AND LIGHT PIPE</b>        |                             |
| .X ±.25   |        | CHECKED              |           |  |                             |
| MATERIAL AND FINISH   |        | QA APP'D             |           | SIZE<br>C  | DWG. NO.<br>P-U90-G3X1-1XXX |
| REF.  |        | IE APP'D             |           | SCALE<br>2:1   | PROJECT<br>PROJECT          |
| CODE IDENT. NO.   |        | DWG APP'D<br>A.GREEN | DEC.5.07  | SHEET<br>6 OF 11   | REV.<br>Y                   |

DO NOT SCALE DRAWING  
 THIS DOCUMENT CONTAINS PROPRIETARY INFORMATION AND SUCH INFORMATION MAY NOT BE DISCLOSED TO OTHERS FOR ANY PURPOSE OR USED FOR MANUFACTURING PURPOSES WITHOUT PERMISSION FROM AMPHENOL CANADA CORP.

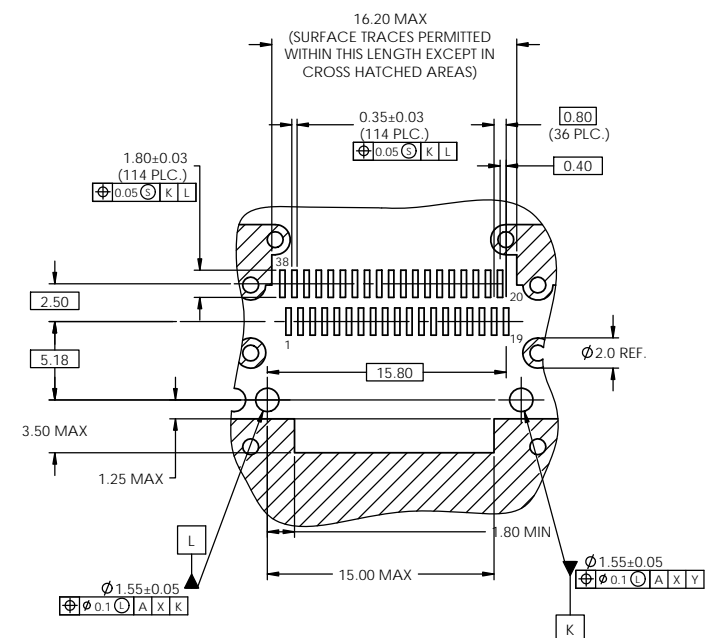
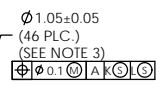
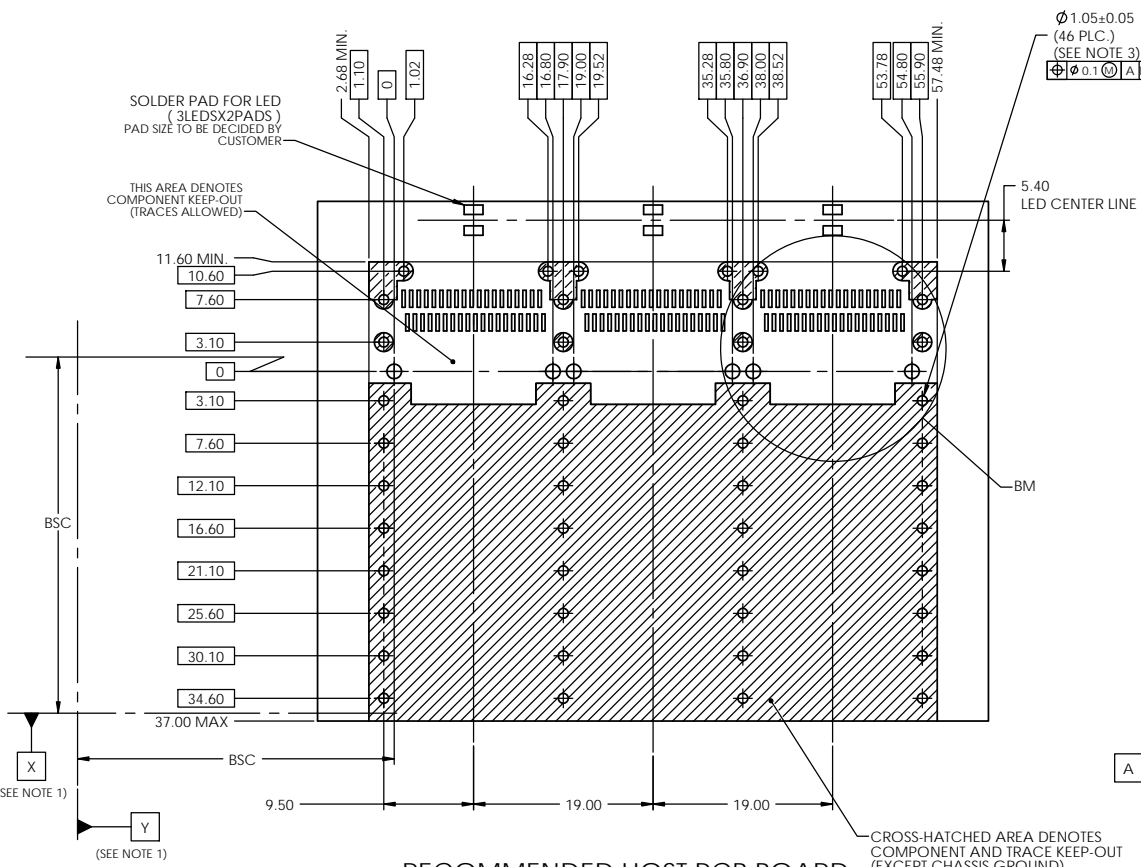


**RECOMMENDED HOST PCB BOARD  
 SINGLE LEVEL MOUNTING LAYOUT  
 FOR SINGLE BARREL LIGHT PIPE  
 (COMPONENT SIDE OF BOARD)**

- NOTES:
- DATUM X AND Y ESTABLISHED BY CUSTOMER'S FUDUCIAL.
  - LOCATION OF EDGE OF PCB IS APPLICATION SPECIFIC.
  - FINISHED HOLE SIZE.



|   |        |                 |           |  |                 |
|---|--------|-----------------|-----------|--|-----------------|
| UNLESS OTHERWISE SPECIFIED DIMENSIONS ARE IN MILLIMETER TOLERANCES ARE: |        | APPROVALS       | DATE      | Amphenol High Speed Interconnects<br>A Division of Amphenol Corp. www.amphenol-highspeed.com |                 |
| DECIMALS  | ANGLES | DRAWN<br>Z.LJ   | MAY 23/08 | TITLE  |                 |
| .XX ±.10  | ± 1°   | DESIGNED<br>ZLJ | MAY 23/08 | QSFP 1x3 CAGE<br>BEHIND BEZEL  |                 |
| .X ±.25   |        | CHECKED         |           | WITH HEATSINK, CLIP AND LIGHT PIPE   |                 |
| MATERIAL AND FINISH   |        | QA APP'D        |           | SIZE   | DWG. NO.        |
|   |        | IE APP'D        |           | C  | P-U90-G3X1-1XXX |
| REF.  |        | DWG APP'D       | DEC.5.07  | SCALE  | PROJECT         |
| CODE IDENT. NO.   |        | A.GREEN         |           | 2:1  | PROJECT         |
|   |        |                 |           |  | SHEET           |
|   |        |                 |           |  | 7 OF 11         |



**RECOMMENDED HOST PCB BOARD  
 BEHIND BEZEL BELLY TO BELLY LAYOUT  
 FOR SINGLE BARREL LIGHT PIPE  
 (COMPONENT SIDE OF BOARD)**

**3.20±0.32  
 FOR BELLY TO BELLY APPLICATION**

**NOTES:**

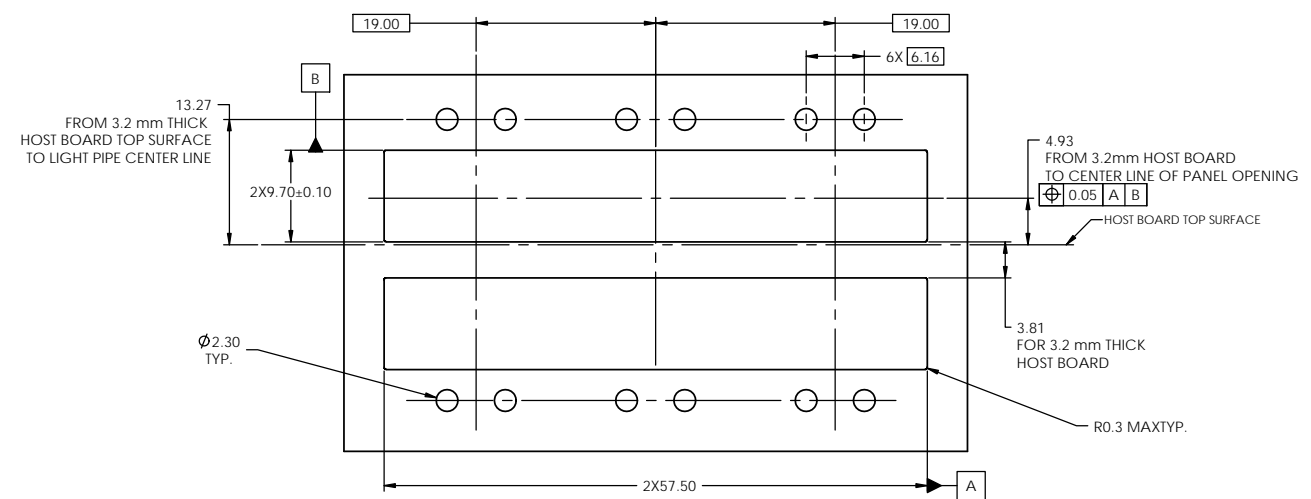
- DATUM X AND Y ESTABLISHED BY CUSTOMER'S FUDICIAL.
- LOCATION OF EDGE OF PCB IS APPLICATION SPECIFIC.
- FINISHED HOLE SIZE.



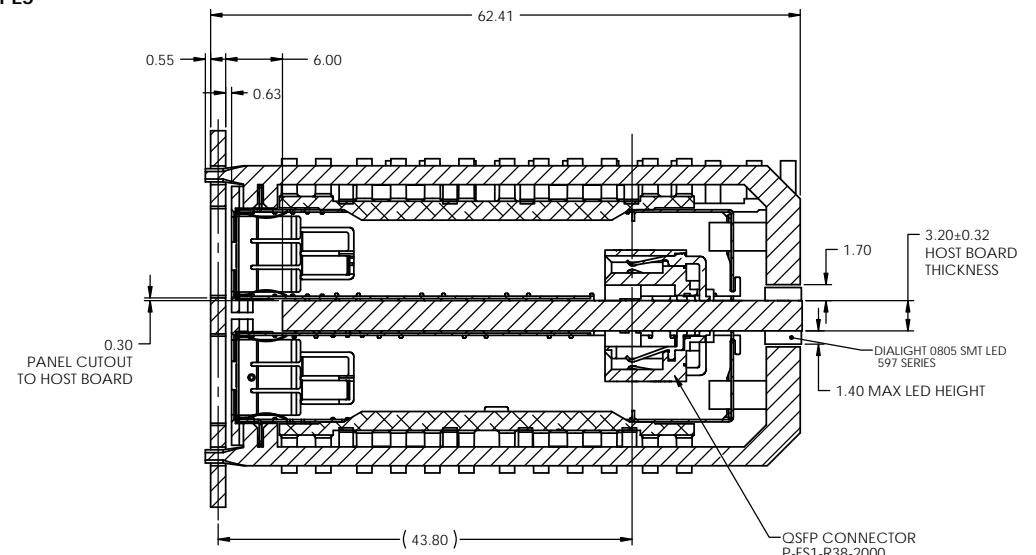
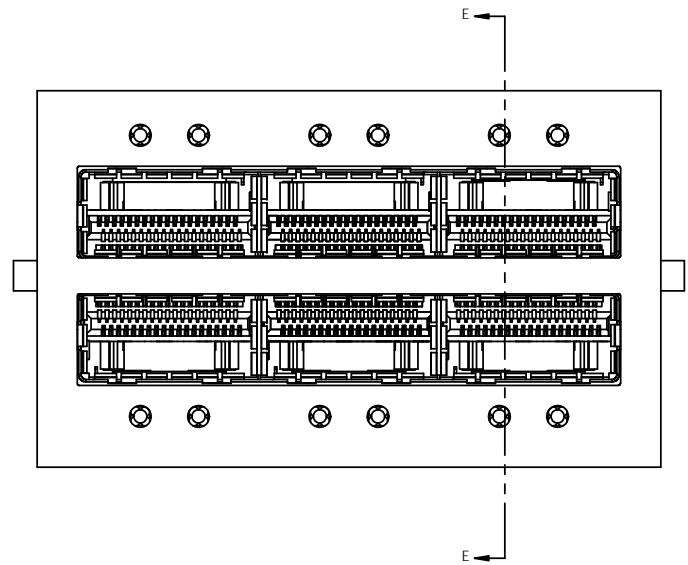
|   |        |                      |           |  |                             |
|---|--------|----------------------|-----------|--|-----------------------------|
| UNLESS OTHERWISE SPECIFIED DIMENSIONS ARE IN MILLIMETER TOLERANCES ARE: |        | APPROVALS            | DATE      | Amphenol High Speed Interconnects<br>A Division of Amphenol Corp. www.amphenol-highspeed.com |                             |
| DECIMALS  | ANGLES | DRAWN<br>Z.LJ        | MAY 23/08 |  |                             |
| .XX ±.10  | ± 1°   | DESIGNED<br>ZLJ      | MAY 23/08 | TITLE<br><b>QSFP 1x3 CAGE<br/>BEHIND BEZEL<br/>WITH HEATSINK, CLIP AND LIGHT PIPE</b>        |                             |
| .X ±.25   |        | CHECKED              |           | SIZE<br>C  | DWG. NO.<br>P-U90-G3X1-1XXX |
| MATERIAL AND FINISH   |        | QA APP'D             |           | SCALE<br>5:2   | PROJECT<br>PROJECT          |
| REF.  |        | IE APP'D             |           | PROJECT  | SHEET<br>8 OF 11            |
| CODE IDENT. NO.   |        | DWG APP'D<br>A.GREEN | DEC.5.07  |  |                             |

DO NOT SCALE DRAWING  
 THIS DOCUMENT CONTAINS PROPRIETARY INFORMATION AND SUCH INFORMATION MAY NOT BE DISCLOSED TO OTHERS FOR ANY PURPOSE OR USED FOR MANUFACTURING PURPOSES WITHOUT PERMISSION FROM AMPHENOL CANADA CORP.





**PANEL CUTOUT FOR BEHIND BEZEL  
 BELLY TO BELLY OPTION  
 WITH ROUND LIGHT PIPES**

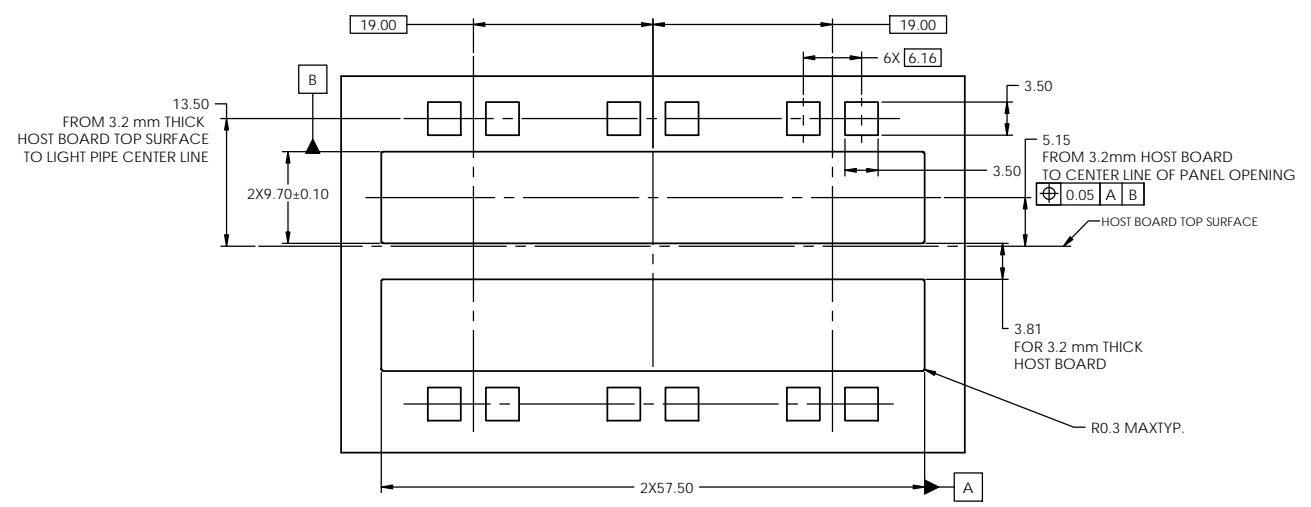


**PART NUMBER SHOWN  
 U90-G351-101A  
 (WITH ROUND LIGHT PIPE)**

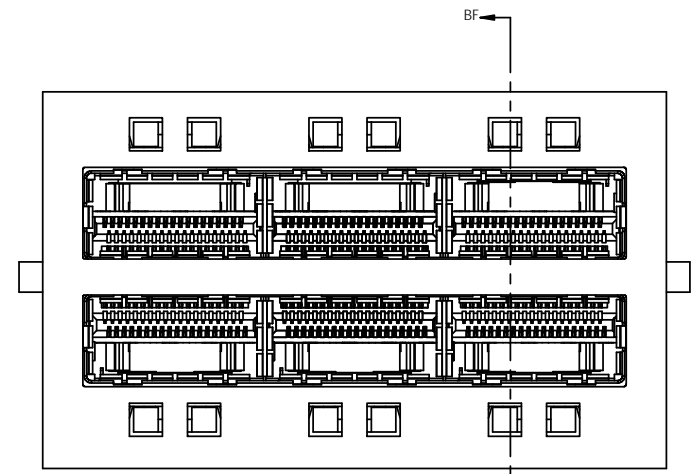


|   |        |                 |           |  |                 |
|---|--------|-----------------|-----------|--|-----------------|
| UNLESS OTHERWISE SPECIFIED DIMENSIONS ARE IN MILLIMETER TOLERANCES ARE: |        | APPROVALS       | DATE      | Amphenol High Speed Interconnects<br>A Division of Amphenol Corp. www.amphenol-highspeed.com |                 |
| DECIMALS  | ANGLES | DRAWN<br>Z.LJ   | MAY 23/08 |  |                 |
| .XX ±.10  | ± 1°   | DESIGNED<br>ZLJ | MAY 23/08 | TITLE  |                 |
| .X ±.25   |        | CHECKED         |           | QSFP 1x3 CAGE<br>BEHIND BEZEL  |                 |
| MATERIAL AND FINISH   |        | QA APP'D        |           | WITH HEATSINK, CLIP AND LIGHT PIPE   |                 |
| REF.  |        | IE APP'D        |           | SIZE   | DWG. NO.        |
| CODE IDENT. NO.   |        | DWG APP'D       | A.GREEN   | C  | P-U90-G3X1-1XXX |
|   |        |                 | DEC.5.07  | SCALE  | PROJECT         |
|   |        |                 |           | 1:1  | PROJECT         |
|   |        |                 |           |  | SHEET           |
|   |        |                 |           |  | 9 OF 11         |

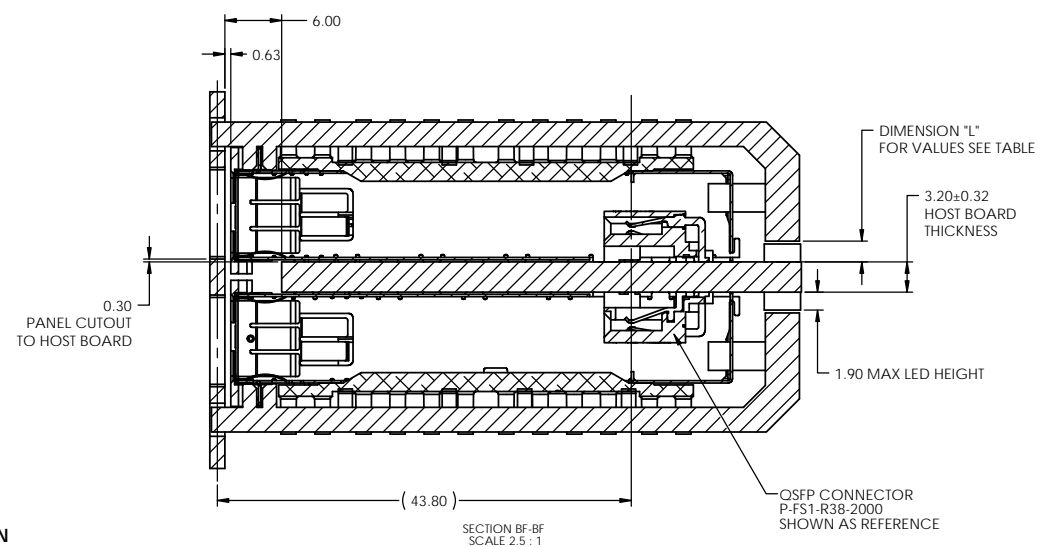
DO NOT SCALE DRAWING  
 THIS DOCUMENT CONTAINS PROPRIETARY INFORMATION AND SUCH INFORMATION MAY NOT BE DISCLOSED TO OTHERS FOR ANY PURPOSE OR USED FOR MANUFACTURING PURPOSES WITHOUT PERMISSION FROM AMPHENOL CANADA CORP.



PANEL CUTOUT FOR  
 BEHIND BEZEL  
 BELLY TO BELLY OPTION  
 WITH LIGHT PIPES



PART NUMBER SHOWN  
 U90-G351-103A  
 (WITH SQUARE LIGHT PIPE)



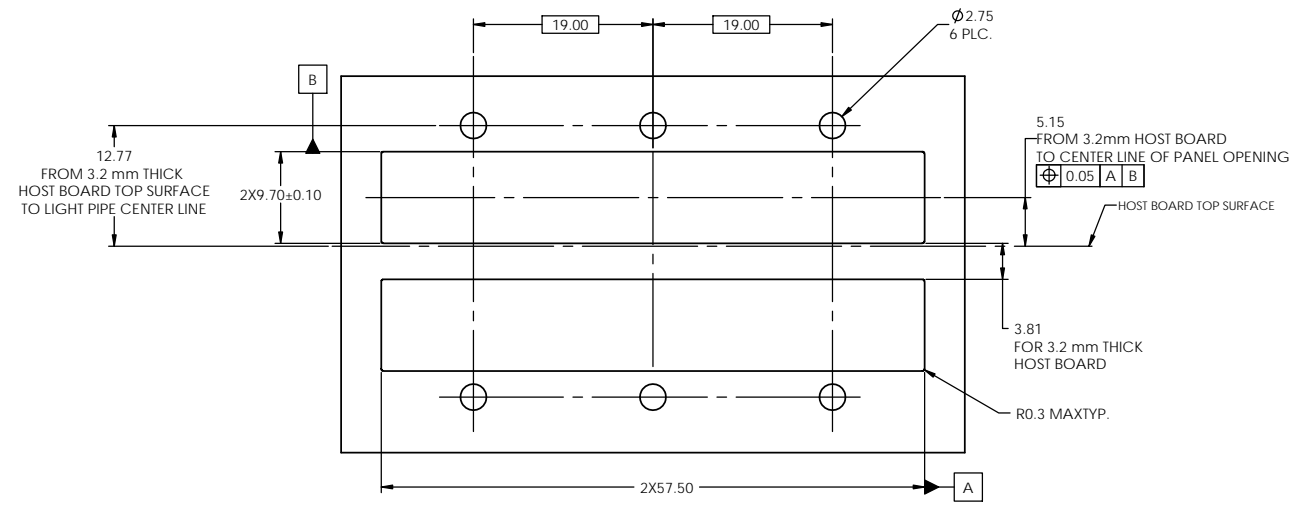
| PART NUMBER   | DIMENSION "L" |
|---------------|---------------|
| U90-G3X1-1X3X | 2.20          |
| U90-G3X1-1XBX | 1.45          |



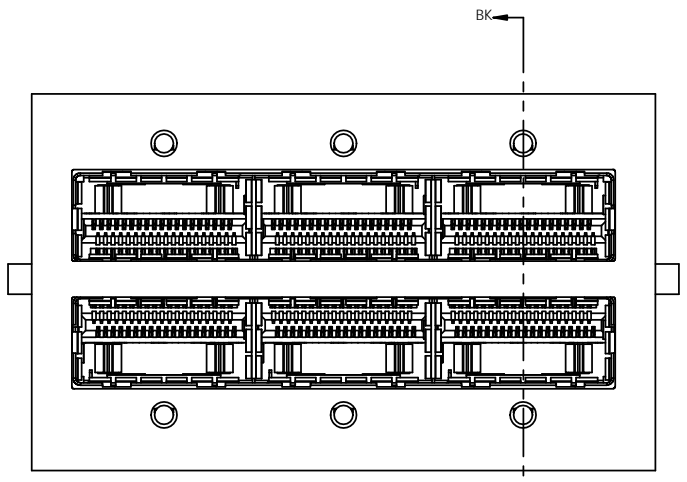
|   |        |           |           |
|---|--------|-----------|-----------|
| UNLESS OTHERWISE SPECIFIED DIMENSIONS ARE IN MILLIMETER TOLERANCES ARE: |        | APPROVALS | DATE      |
| DECIMALS  | ANGLES | DRAWN     | MAY 23/08 |
| .XX ±.10  | ± 1°   | DESIGNED  | MAY 23/08 |
| .X ±.25   |        | CHECKED   |           |
| MATERIAL AND FINISH   |        | QA APP'D  |           |
| REF.  |        | IE APP'D  |           |
| CODE IDENT. NO.   |        | DWG APP'D | DEC.5.07  |
|   |        | A.GREEN   |           |

|   |                 |          |  |
|---|-----------------|----------|--|
| Amphenol High Speed Interconnects<br><small>A Division of Amphenol Corp. www.amphenol-highspeed.com</small> |                 |          |  |
| TITLE<br><b>QSFP 1x3 CAGE<br/>   BEHIND BEZEL<br/>   WITH HEATSINK, CLIP AND LIGHT PIPE</b>                 |                 |          |  |
| SIZE  | DWG. NO.        | REV.     |  |
| C   | P-U90-G3X1-1XXX | Y        |  |
| SCALE   | PROJECT         | SHEET    |  |
| 1:1   | PROJECT         | 10 OF 11 |  |

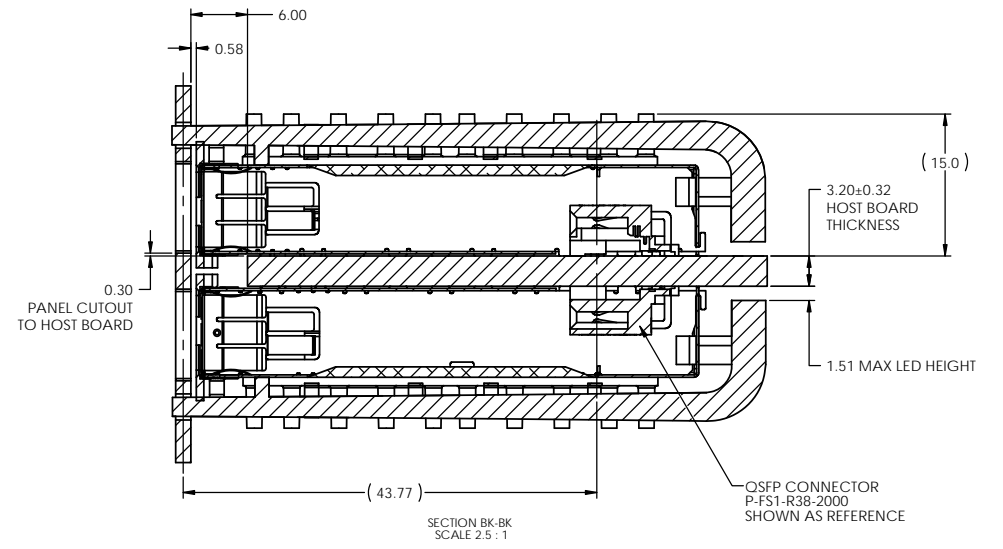
DO NOT SCALE DRAWING  
 THIS DOCUMENT CONTAINS PROPRIETARY INFORMATION AND SUCH INFORMATION MAY NOT BE DISCLOSED TO OTHERS FOR ANY PURPOSE OR USED FOR MANUFACTURING PURPOSES WITHOUT PERMISSION FROM AMPHENOL CANADA CORP.



**PANEL CUTOUT FOR  
 BEHIND BEZEL  
 BELLY TO BELLY OPTION  
 WITH LIGHT PIPES**



**PART NUMBER SHOWN  
 U90-G351-107A  
 (WITH SINGLE BARREL ROUND LIGHT PIPE)**



|   |  |                   |           |   |                          |
|---|--|-------------------|-----------|---|--------------------------|
| UNLESS OTHERWISE SPECIFIED DIMENSIONS ARE IN MILLIMETER TOLERANCES ARE: |  | APPROVALS         | DATE      | <b>Amphenol High Speed Interconnects</b><br>A Division of Amphenol Corp. www.amphenol-highspeed.com |                          |
| DECIMALS .XX ± .10<br>.X ± .25  |  | DRAWN Z.LJ        | MAY 23/08 |   |                          |
| ANGLES ± 1°   |  | DESIGNED ZLJ      | MAY 23/08 | TITLE<br><b>QSFP 1x3 CAGE<br/>BEHIND BEZEL<br/>WITH HEATSINK, CLIP AND LIGHT PIPE</b>               |                          |
| MATERIAL AND FINISH   |  | CHECKED           |           | SIZE C  | DWG. NO. P-U90-G3X1-1XXX |
| REF.  |  | QA APP'D          |           | SCALE 1:1   | PROJECT PROJECT          |
| CODE IDENT. NO.   |  | IE APP'D          |           | PROJECT PROJECT   | SHEET 11 OF 11           |
|   |  | DWG APP'D A.GREEN | DEC.5.07  |   |                          |

DO NOT SCALE DRAWING  
 THIS DOCUMENT CONTAINS PROPRIETARY INFORMATION AND SUCH INFORMATION MAY NOT BE DISCLOSED TO OTHERS FOR ANY PURPOSE OR USED FOR MANUFACTURING PURPOSES WITHOUT PERMISSION FROM AMPHENOL CANADA CORP.

