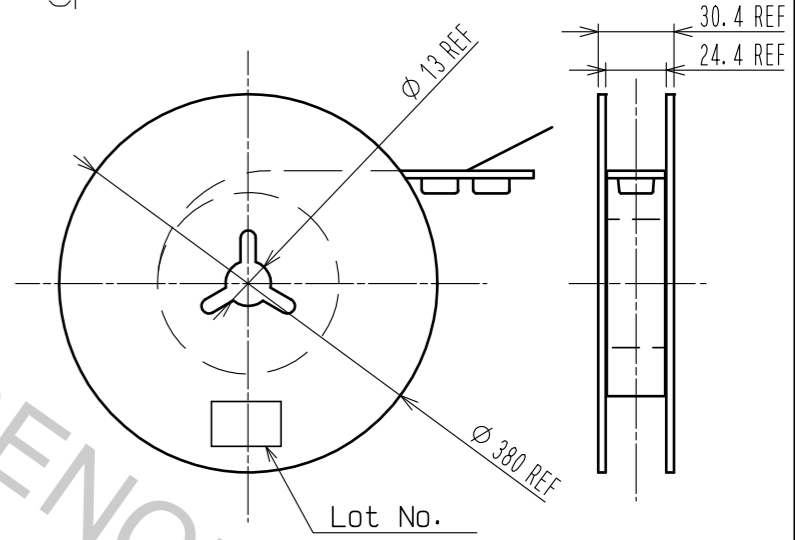
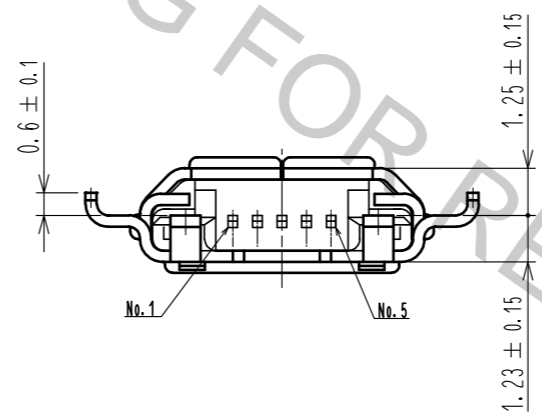
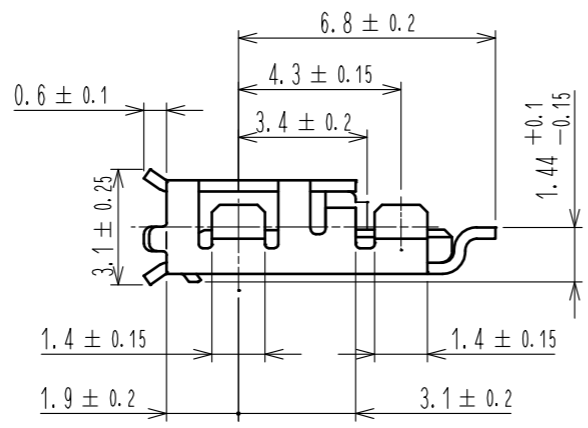
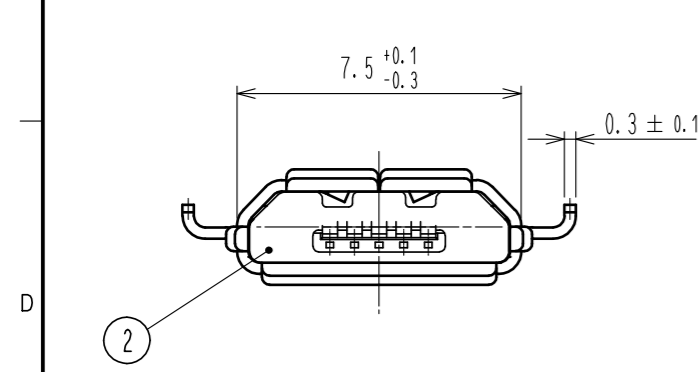
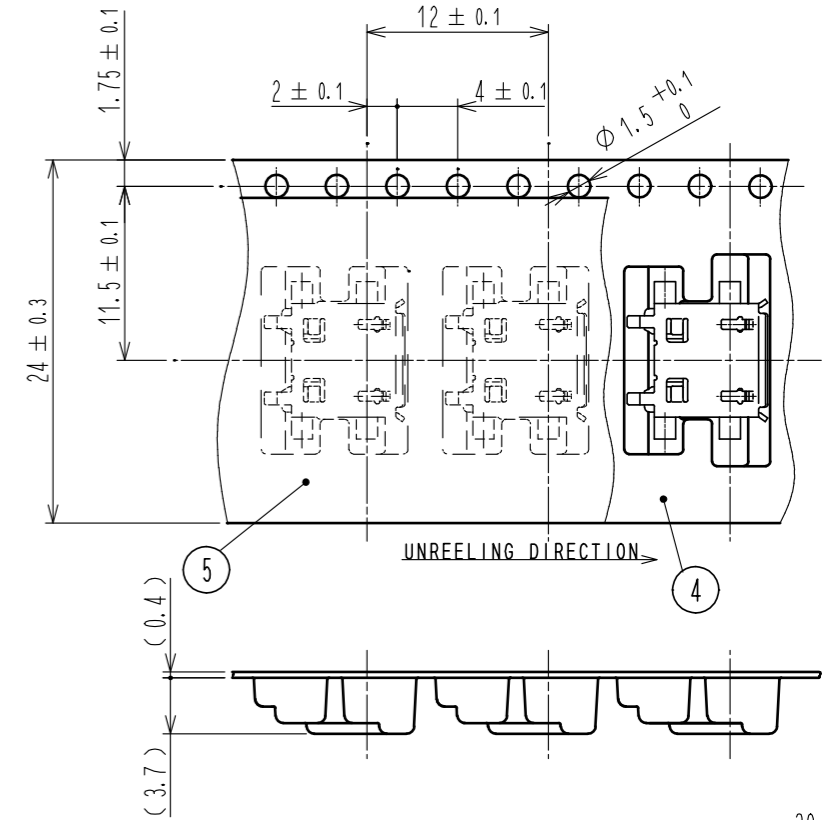
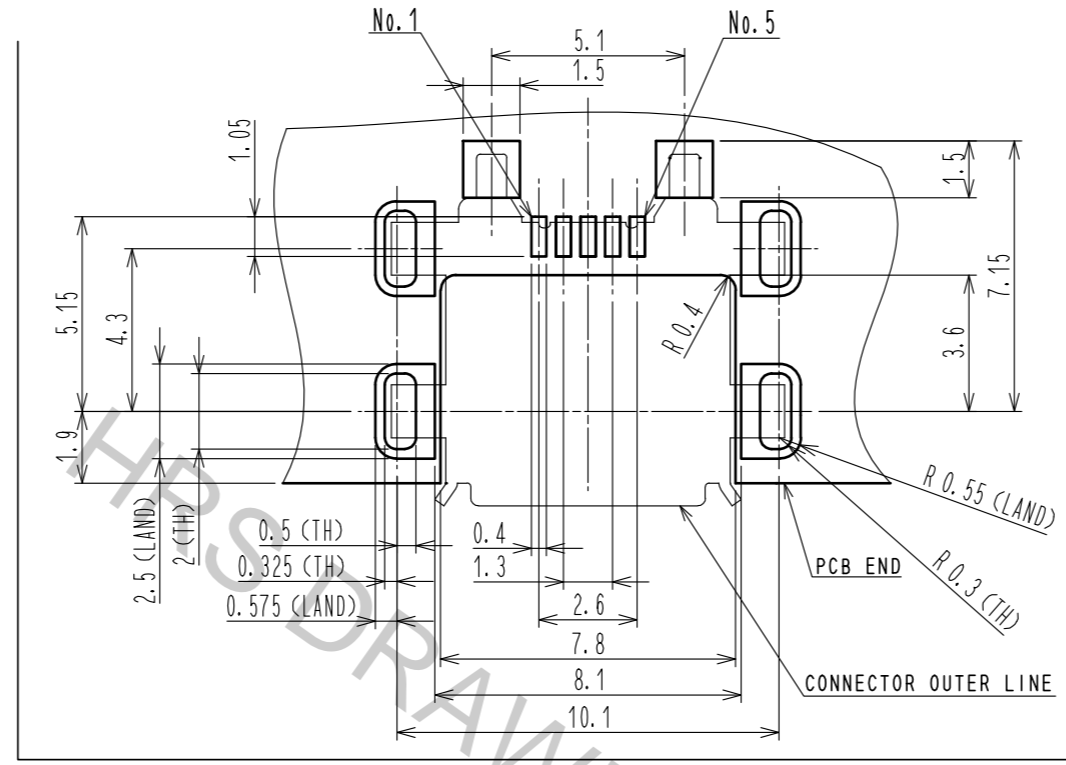
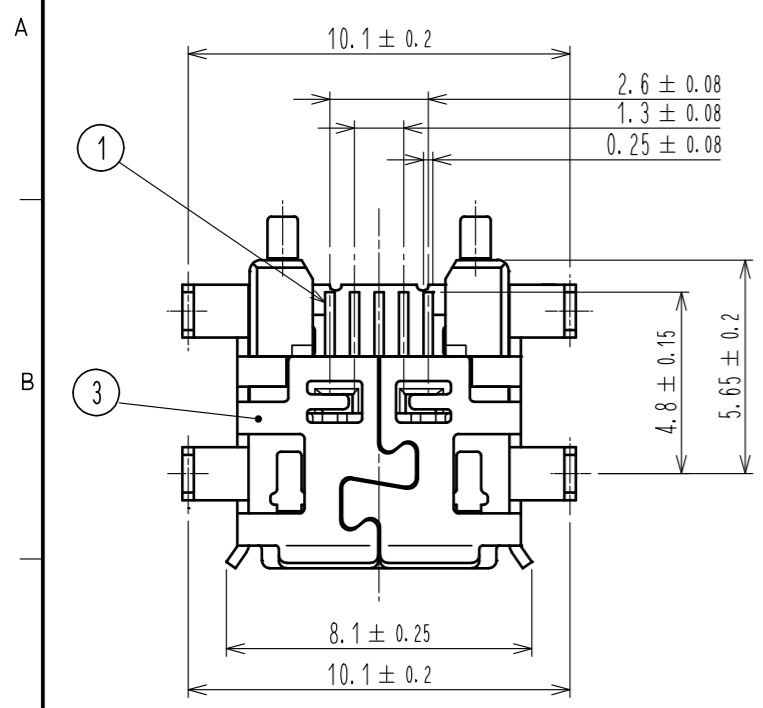


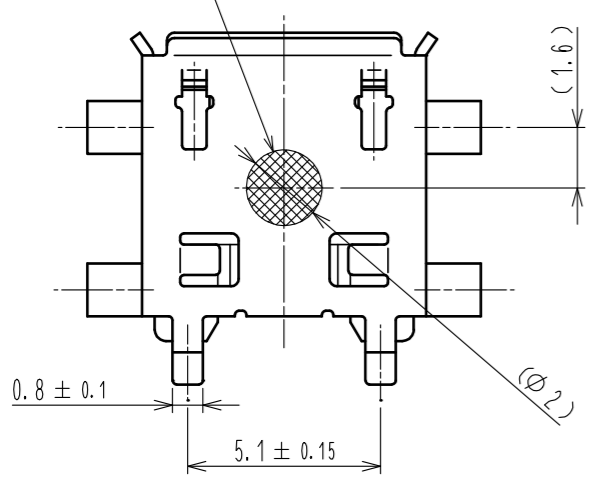
Apr.1.2017 Copyright 2017 HIROSE ELECTRIC CO., LTD. All Rights Reserved.

RECOMMENDED PATTERN

4 DRAWING FOR PACKING (FREE)



PICK AND PLACE AREA



- 1 INTERFACE DIMENSIONS CONFORMS TO USB2.0 SPECIFICATION.
- 2 CO-PLANARITY TO BE 0.08MAX.
- 3 PLATING
CONACT AREA:GOLD 0.05µm MIN OVER PALLADIUM NICKEL 0.75µm MIN.
LEAD AREA :GOLD 0.05µm MIN.
UNDER PLATING:NICKEL 2µm MIN.
- 4 PER REEL:2000pcs.
- 5 AS FOR PART No. 3. THE PERFORMANCE REMAINS GOOD EVEN IF THERE IS A RUBBING WOUND BY THE ASSEMBLY PROCESS.
- 6 AS FOR PART No. 2. A PART OF SHAPE MAY BECOME DIFFERENT DEPENDING ON THE PRODUCTION METHOD.

2	LCP	COLOR BLACK UL94V-0	5	PE	
1	COPPER ALLOY	3	4	PS	
NO.	MATERIAL	FINISH . REMARKS	NO.	MATERIAL	FINISH . REMARKS
UNITS	mm	SCALE	5 : 1	COUNT	DESCRIPTION OF REVISIONS
APPROVED : NM. NISHIMATSU		15.10.27		DRAWING NO. EDC-126514-31-00	
CHECKED : KN. ICHIKAWA		15.10.27		PART NO. ZX62MD1-B-5P(31)	
DESIGNED : TS. ITO		15.10.27		CODE NO. CL242-0041-6-31	
DRAWN : AK. AKIYAMA		15.10.27		DATE	
HIROSE ELECTRIC CO., LTD.				1/1	